

# DPMS Digital Data Wall

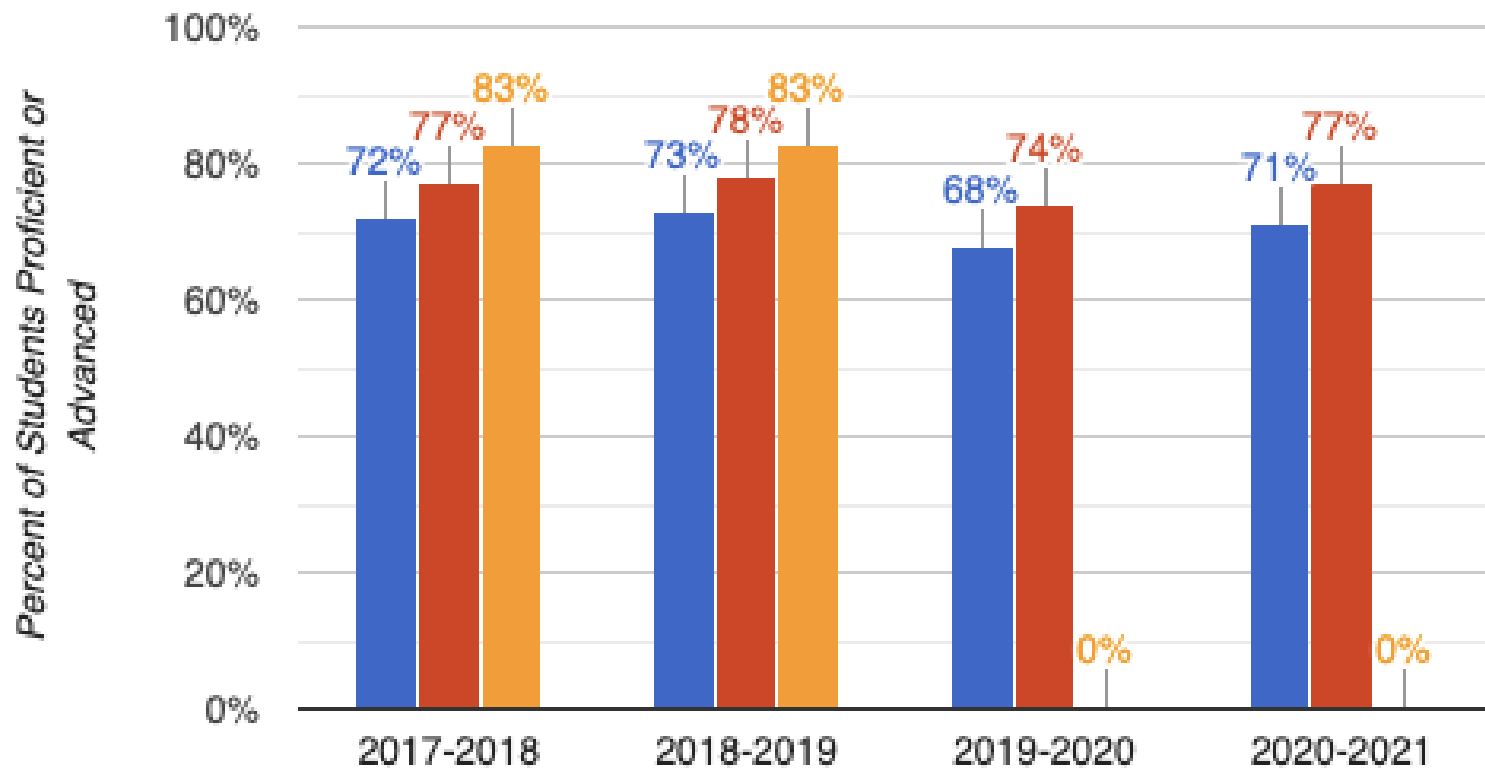
for school website

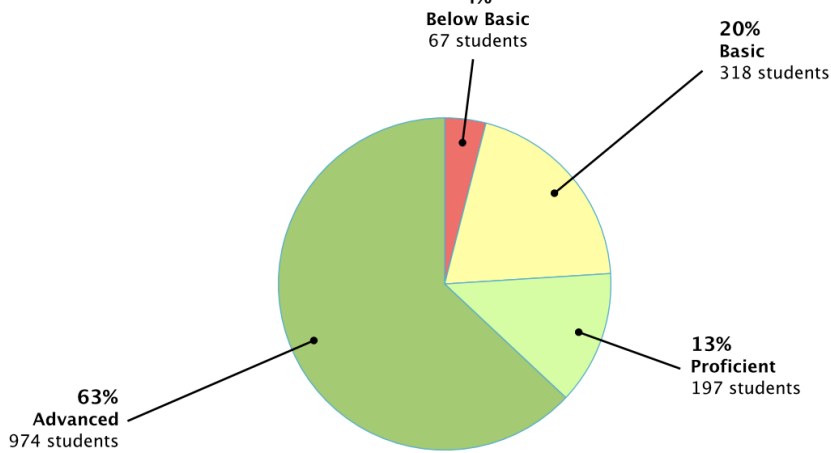
2020-2021

# Winter 2021 Reading Inventory

## Reading Inventory Across Years

■ Fall ■ Winter ■ Spring

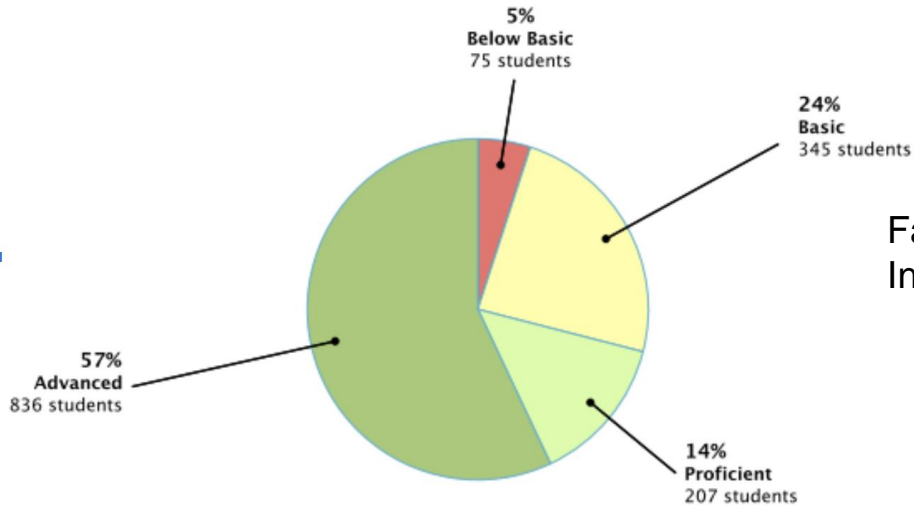




Winter Reading Inventory

**76% of All Students Proficient/Advanced in Winter Assessment**

An increase of 5% in the proficient/advanced range between the fall to winter administration.

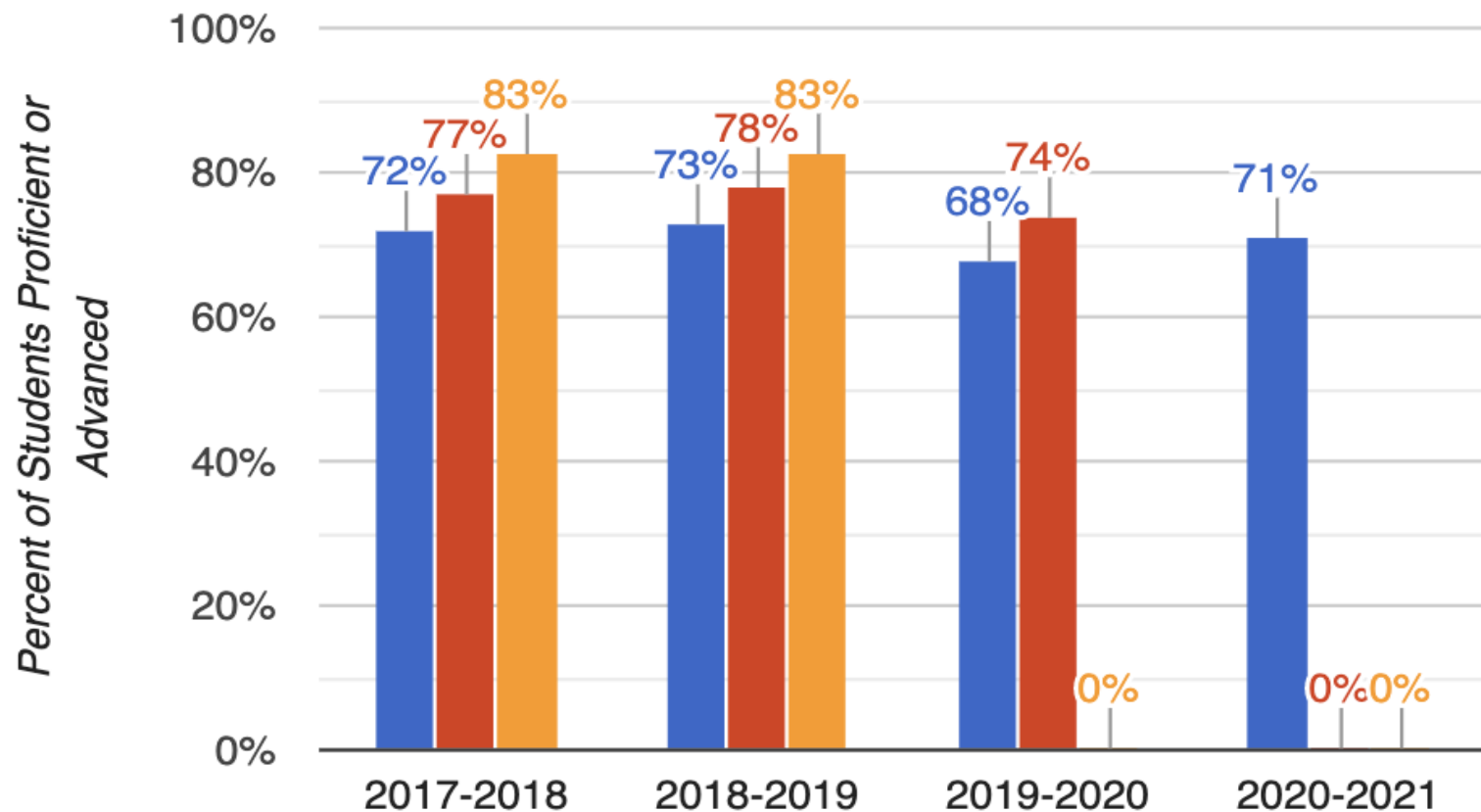


Fall Reading Inventory

# Fall 2020 Reading Inventory

## Reading Inventory Across Years

Fall Winter Spring





# Proficiency Summary Report

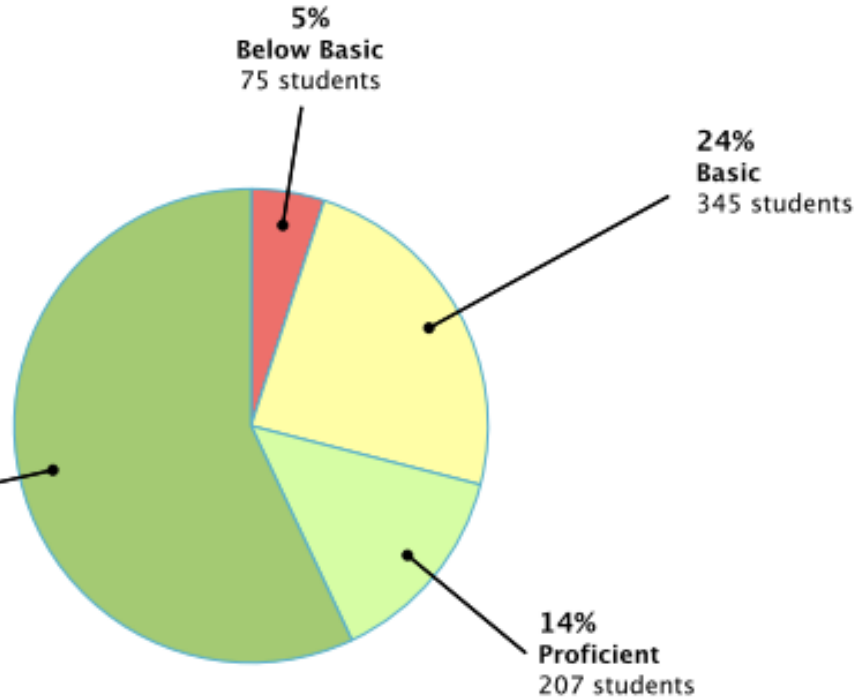
SCHOOL: DRAPER PARK MIDDLE

Time Period: 08/17/20 – 10/01/20



PROGRESS  
MONITORING

Total Students: 1,463



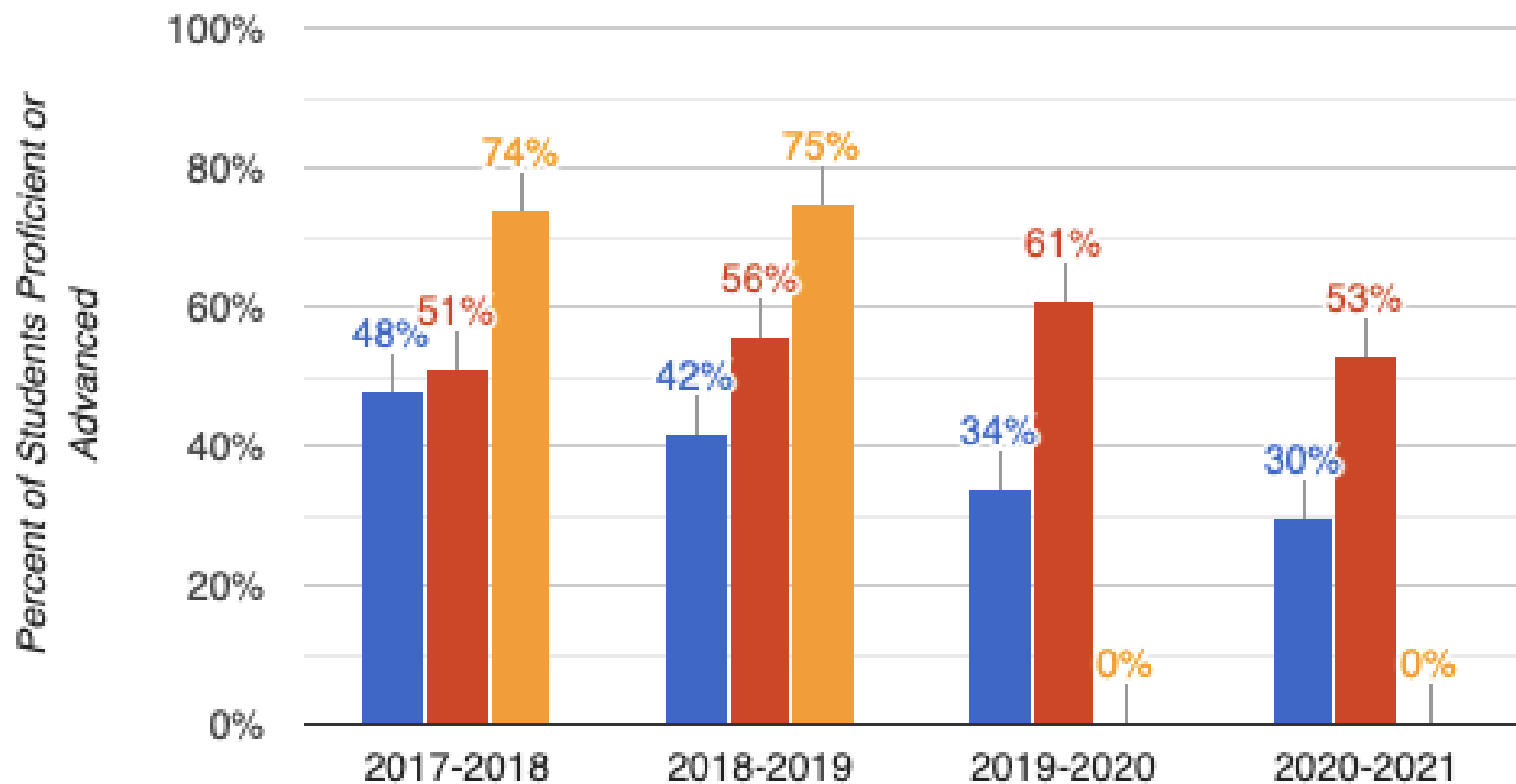
**71% of All Students  
Proficient/Advanced**

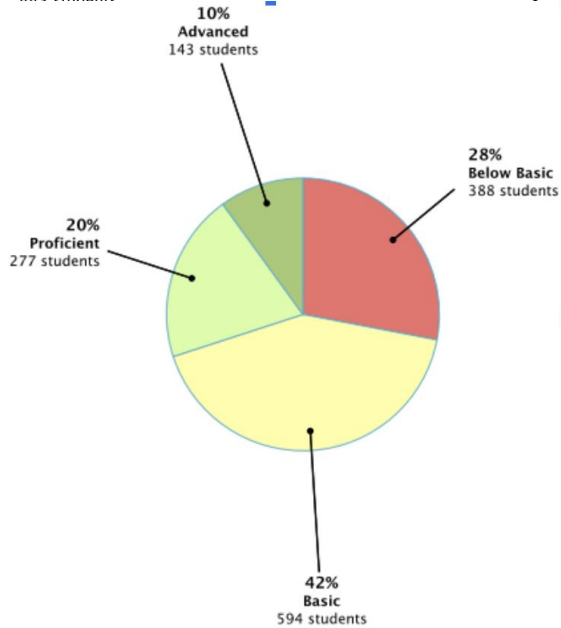
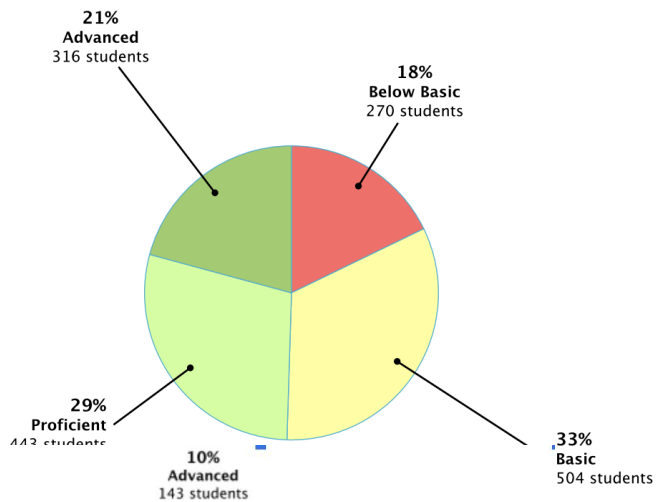
# Winter 2021 Math Inventory



## Math Inventory Across Years

Fall Winter Spring





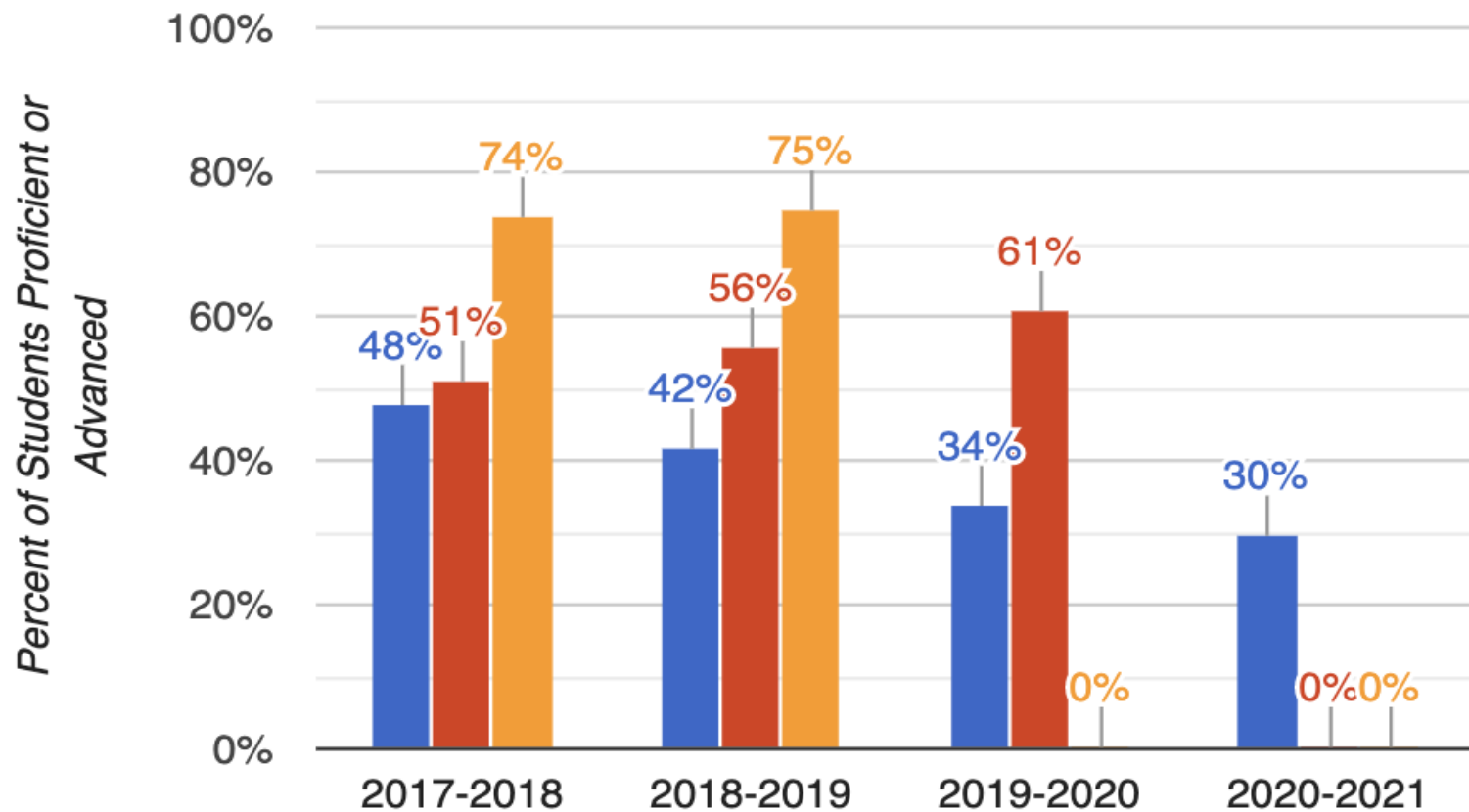
## 50% of All Students Proficient/Advanced in Winter Assessment

An increase of 20% in the proficient/advanced range between the fall to winter administration.

# Fall 2020 Math Inventory

## Math Inventory Across Years

Fall Winter Spring





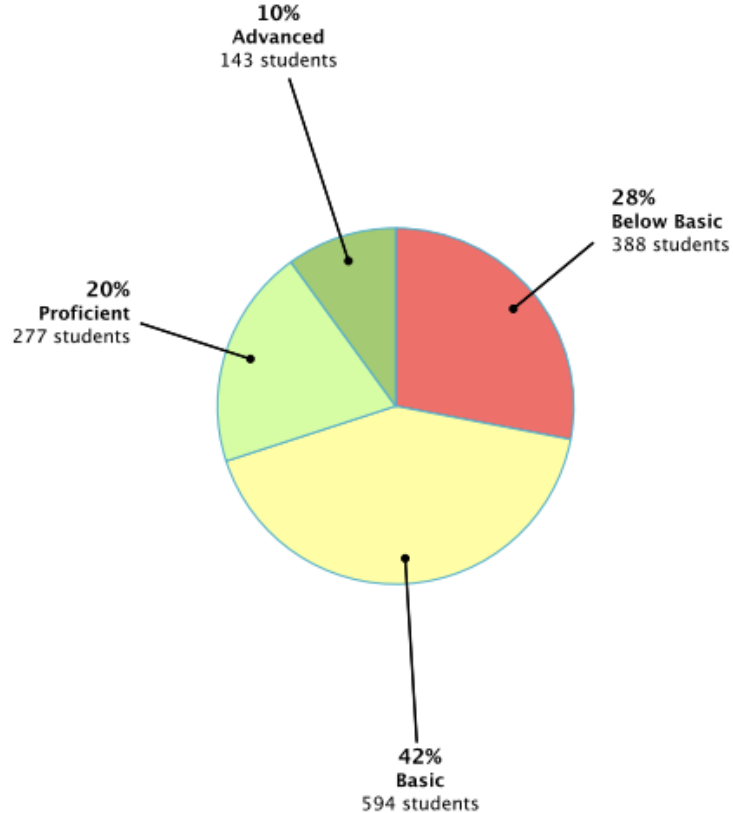
# Proficiency Summary Report

SCHOOL: DRAPER PARK MIDDLE

Time Period: 08/17/20 – 10/01/20



Total Students: 1,402



**30% of All Students  
Proficient/Advanced**

# **Canyons School District EWS Benchmarks (Early Warning Signs)**

Early warning signs is a system based on student data to identify students who exhibit behavior or academic performance that puts them at risk of not graduating from high school.

# Canyons School District EWS Benchmarks (Early Warning Signs)

## On-Track in Course Performance C's or better in all classes 2.50 or higher GPA

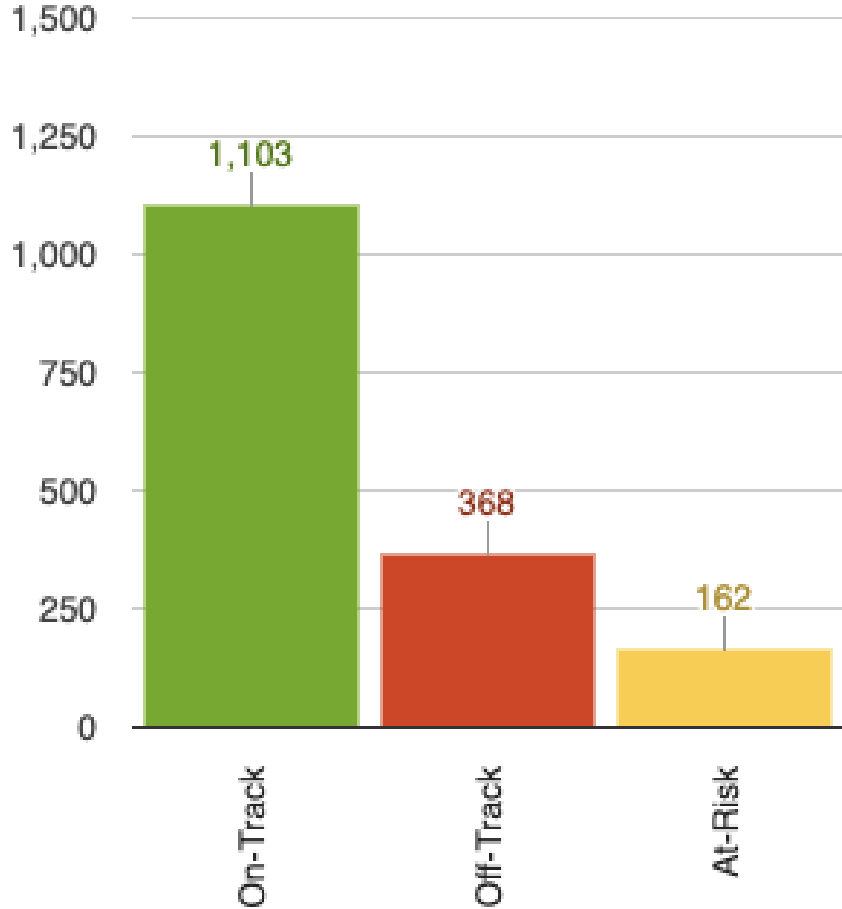
On-Track Indicators	Course Performance		Behavior		Attendance
	Course Performance (Term)	Grade Point Average (Term)	Office Discipline Referrals	Suspensions	Attendance
On-Track	C's or better in all classes	2.50 or higher	<u>Yearly</u> : 2 or fewer Office Referrals	No suspensions	Missed less than 5% instructional days <u>Yearly</u> : Less than 9 days
			<u>Per Term</u> : No Office Referrals		<u>Quarter</u> : Less than 2.25 days <u>Trimester</u> : Less than 3 days
At-Risk for Off-Track	1 or more D's in any class	1.50 to 2.49	<u>Yearly</u> : 3 to 5 Office Referrals	N/A	Missed 5% to 10% instructional days <u>Yearly</u> : 9 to 17.9 days
			<u>Per Term</u> : 1 to 2 Office Referrals		<u>Quarter</u> : 2.25 to 4.49 days <u>Trimester</u> : 3 to 5.99 days
Off-Track	1 or more F's in any class	Less than 1.50	<u>Yearly</u> : 6 or more Office Referrals	1 or more in-school or out-of-school suspensions	Missed 10% to 20% instructional days <u>Yearly</u> : 18 to 35.9 days
			<u>Per Term</u> : 3 or more Office Referrals		<u>Quarter</u> : 4.5 to 8.99 days <u>Trimester</u> : 6 to 11.99 days
Severe	N/A	N/A	N/A	N/A	Missed more than 20% instructional days <u>Yearly</u> : 36 or more days <u>Quarter</u> : 9 or more days <u>Trimester</u> : 12 or more days

\*Absences include any type of absence, excused or unexcused.

# Early Warning Signs: Coursework End of Term 2



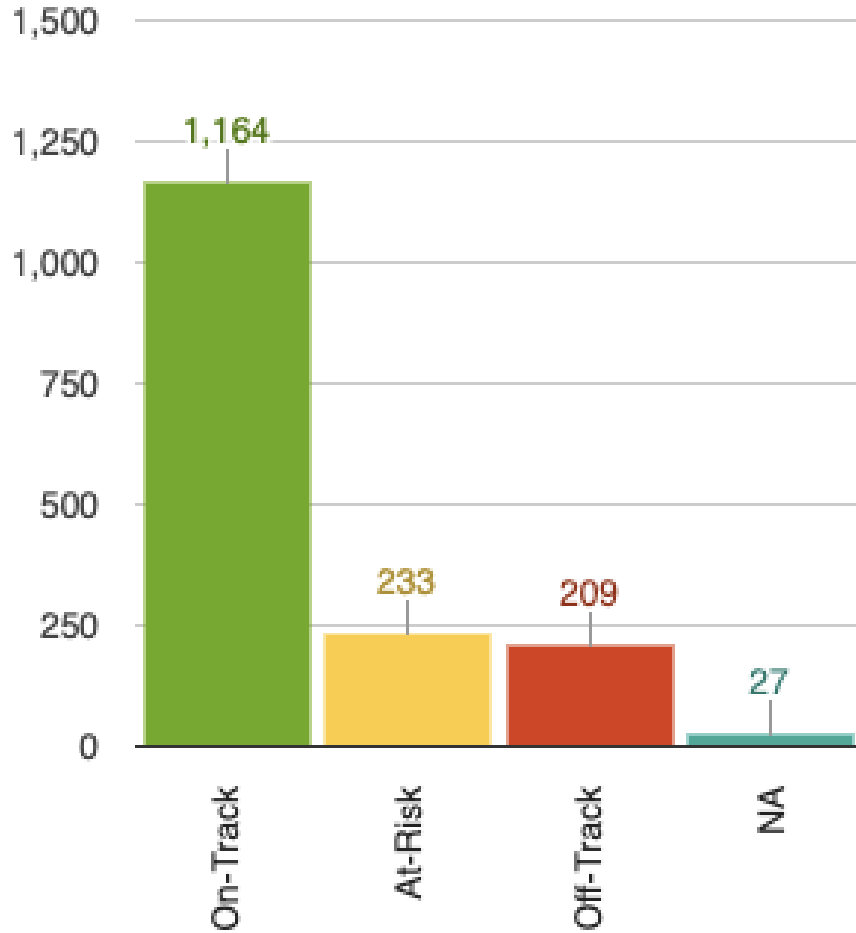
## 2020-2021 EWS - Fs & Ds - T2



End of Term 2

**68% percent of All Students On-Track  
with C's or better in all classes**

## 2020-2021 - EWS - GPA - T2

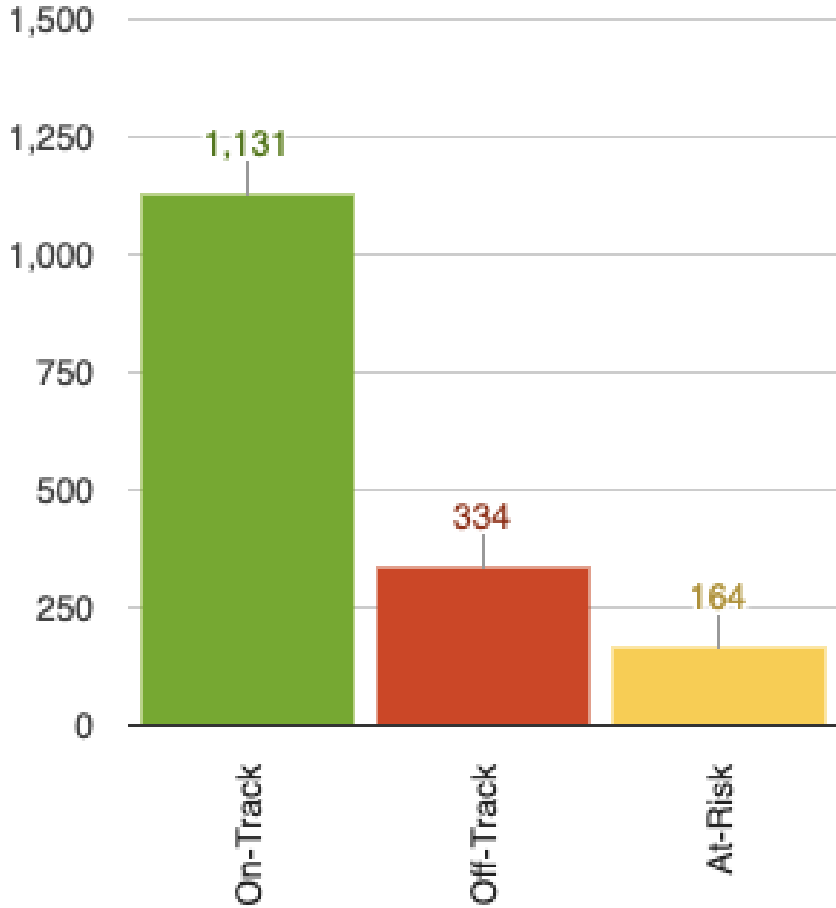


**End of Term 2**

**71% of All Students On-Track  
with GPA of 2.50 or higher**

# Early Warning Signs: Coursework End of Term 2

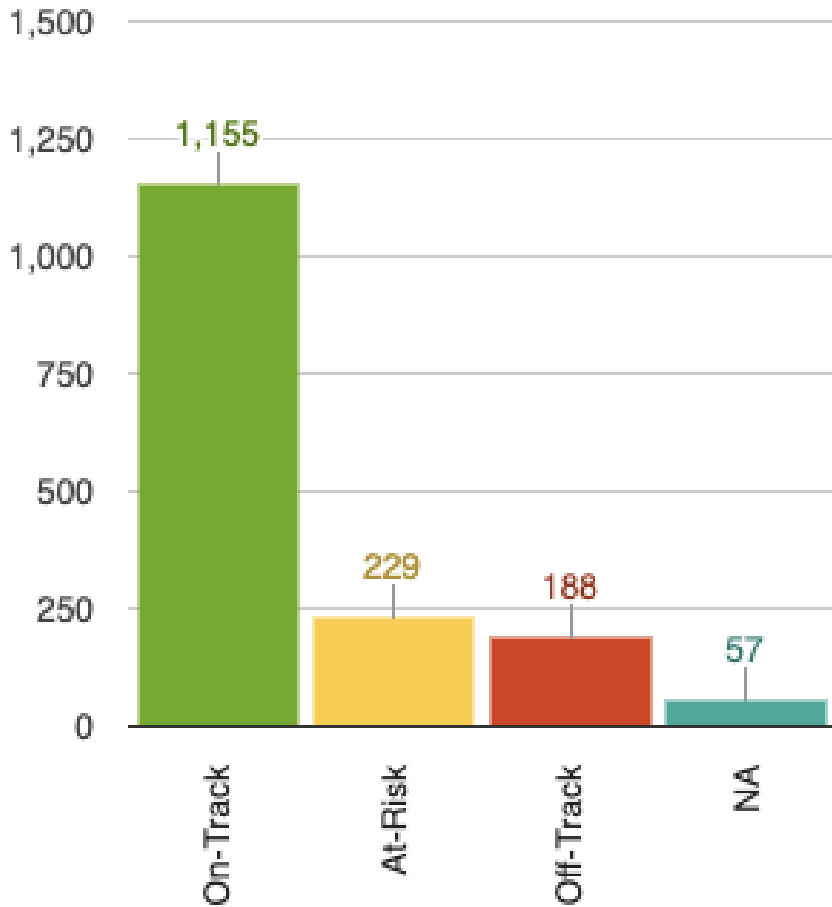
**2020-2021 EWS - Fs & Ds - T1**



**End of Term 1**

**69% percent of All Students On-Track  
with C's or better in all classes**

### 2020-2021 - EWS - GPA - T1



**End of Term 1**

**71% of All Students On-Track  
with GPA of 2.50 or higher**

# Canyons School District EWS Benchmarks (Early Warning Signs)

**On-Track with Attendance**  
(Absences include any type of absence, excused or unexcused).

Miss less than 5% instructional days

Yearly: Miss less than 9 days

Quarterly: Miss less than 2.25 days

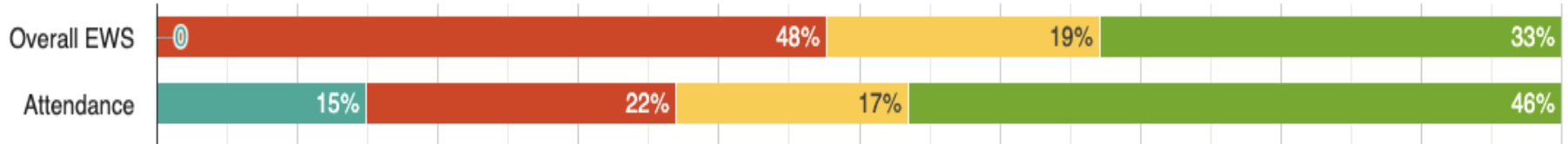
On-Track Indicators	Course Performance		Behavior		Attendance
	Course Performance (Term)	Grade Point Average (Term)	Office Discipline Referrals	Suspensions	Attendance
On-Track	C's or better in all classes	2.50 or higher	<u>Yearly</u> : 2 or fewer Office Referrals	No suspensions	Missed less than 5% instructional days <u>Yearly</u> : Less than 9 days
			<u>Per Term</u> : No Office Referrals		<u>Quarter</u> : Less than 2.25 days <u>Trimester</u> : Less than 3 days
At-Risk for Off-Track	1 or more D's in any class	1.50 to 2.49	<u>Yearly</u> : 3 to 5 Office Referrals	N/A	Missed 5% to 10% instructional days <u>Yearly</u> : 9 to 17.9 days
			<u>Per Term</u> : 1 to 2 Office Referrals		<u>Quarter</u> : 2.25 to 4.49 days <u>Trimester</u> : 3 to 5.99 days
Off-Track	1 or more F's in any class	Less than 1.50	<u>Yearly</u> : 6 or more Office Referrals	1 or more in-school or out-of-school suspensions	Missed 10% to 20% instructional days <u>Yearly</u> : 18 to 35.9 days
			<u>Per Term</u> : 3 or more Office Referrals		<u>Quarter</u> : 4.5 to 8.99 days <u>Trimester</u> : 6 to 11.99 days
Severe	N/A	N/A	N/A	N/A	Missed more than 20% instructional days <u>Yearly</u> : 36 or more days <u>Quarter</u> : 9 or more days <u>Trimester</u> : 12 or more days

\*Absences include any type of absence, excused or unexcused.

Early Warning Signs: Attendance  
End of Term 2

### 2020-2021, Term: 2 - Early Warning System

Severe Off-Track At-Risk On-Track



### End of Term 2

46% of DPMS students on-track with attendance

17% at-risk with attendance

22% off-track with attendance

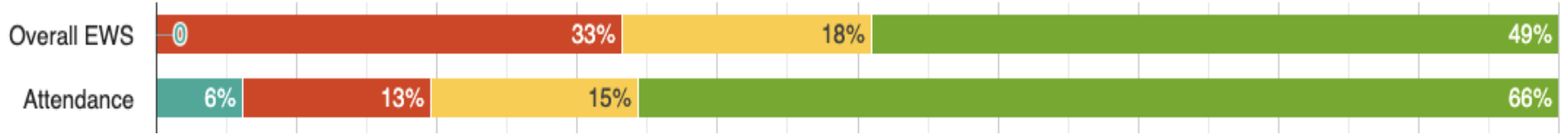
15% severe with attendance



Early Warning Signs: Attendance  
End of Term 1

### 2020-2021, Term: 1 - Early Warning System

Severe Off-Track At-Risk On-Track



### End of Term 1

66% of DPMS students on-track with attendance

15% at-risk with attendance

14% off-track with attendance

6% severe with attendance